

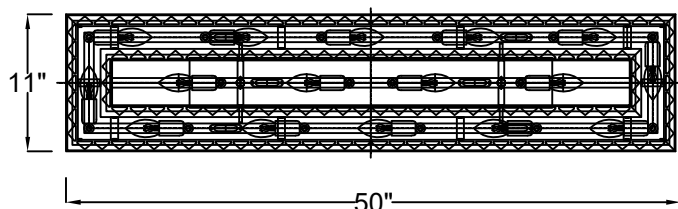
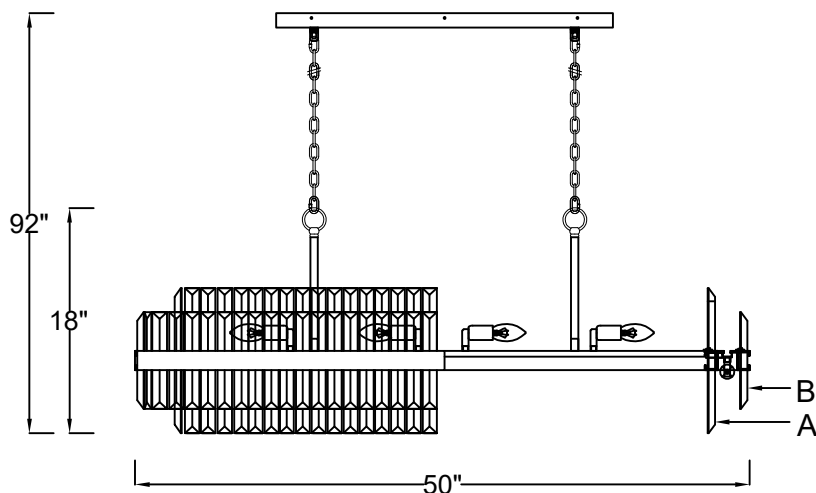
CRYSTORAMA



LIGHTING THE WAY FOR SIXTY YEARS

ASSEMBLY INSTRUCTION MODEL #HAY-1417-AG

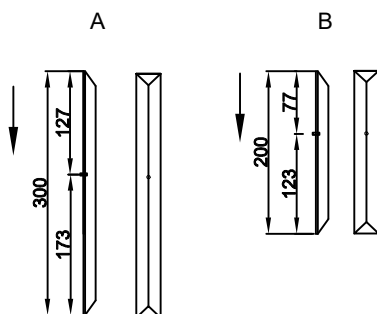
There is a safety cable supplied with this fixture, as it weighs over 50lbs. The fixture should be mounted to the ceiling independent of the outlet box.



Crystal Sets

- A. 62Sets.(1)30x300mm
- B. 82Sets.(1)30x200mm

DETAILED ILLUSTRATION



When dressing the crystals, install the crystal so the shorter end faces toward the ceiling.



All electrical components must be installed by a licensed electrician in accordance with the National Electric Code and the appropriate local electrical codes.



You will need 16-Candelabra Base Bulb

40 Watts Recommended 60 Watts Max

USE LED BULBS FOR EXTENDED USE

This fixture is Dry rated

How to Install

1. Screw the threaded pipe into the coupler and slide the metal tube over the threaded pipe, and secure with fixture loop.
2. Place the mounting plate over the outlet box and mark 6 points on the ceiling at the center of the 6 holes on the mounting plate.
3. Drill the holes at the marked points and insert the plastic anchors.
4. Attach the mounting plate over the outlet box using two outlet box screws. Insert the anchor screws into the plastic anchors to tighten it.
5. Decide the preferred hanging height and choose the correct length of chain needed.
6. Connect one end of chain to the fixture loop using a quick link and the other end to the loop underneath the canopy using the other quick link.
7. Raise the fixture up to the ceiling and do the wire connection. Secure the canopy to the mounting plate by the screws.
8. Insert the crystal rods as illustrated. Please pay attention to the glass rod direction when inserting it into the frame.

Installation of Safety Cable

1. Pass the long threaded pipe on the hickey through the center of outlet box. Attach it to the ceiling joist and secure it with nuts.
2. Feed wires and safety cable up through chain and the hole of screw collar loop. Have the wires and safety cable exit through the side of hickey.
3. Feed safety cable through the cable lock and coil it around the hickey twice. Then feed the cable through the lock again and tighten it with lock screw.
4. Continue to run safety cable through the top of outlet box and secure it to the ceiling joist.



WARNING: This product can expose you to Lead, which is known to the State of California to cause cancer and/or birth defects or reproductive harm. For more information go to www.P65Warnings.ca.gov

CRYSTORAMA



LIGHTING THE WAY FOR SIXTY YEARS

PART NUMBER MODEL #HAY-1417-AG

Part Number

Part Numbers

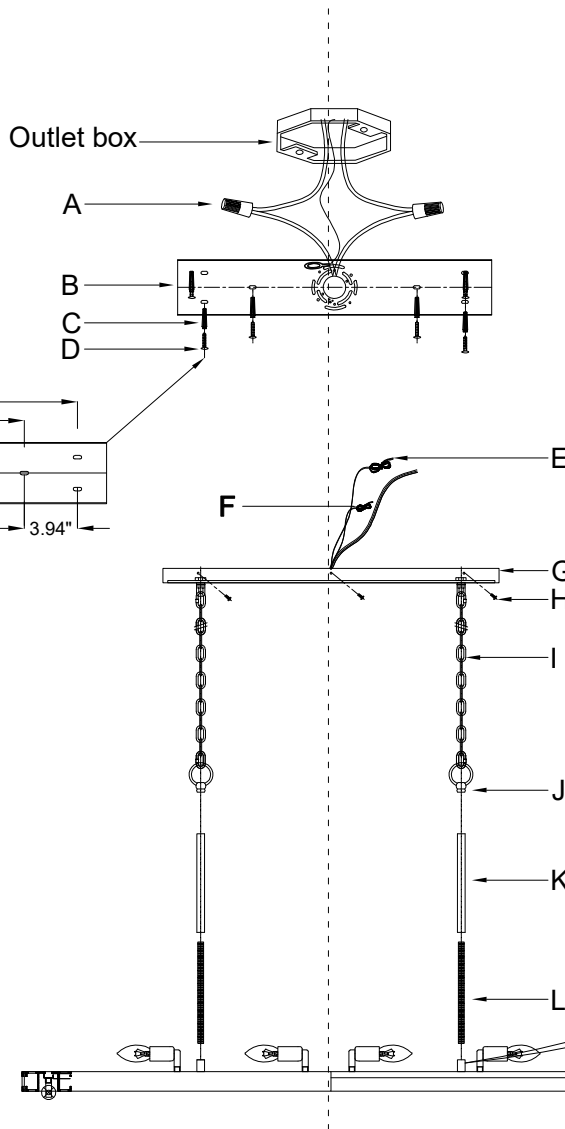
For 50lbs rated outlet box

- (1)-Long threaded rod
- (1)-Hickey
- (1)-Short threaded pip
- (3)-Metal washer
- (7)-Hex nut

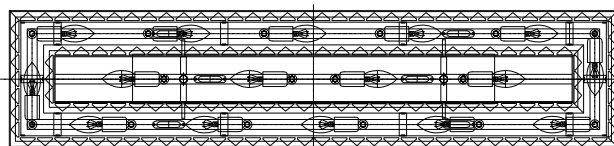
For 100lbs rated outlet box

- (1)-Thread pipe
- (1)-Mounting strap
- (1)-Coupling with set screws
- (1)-Hex nut

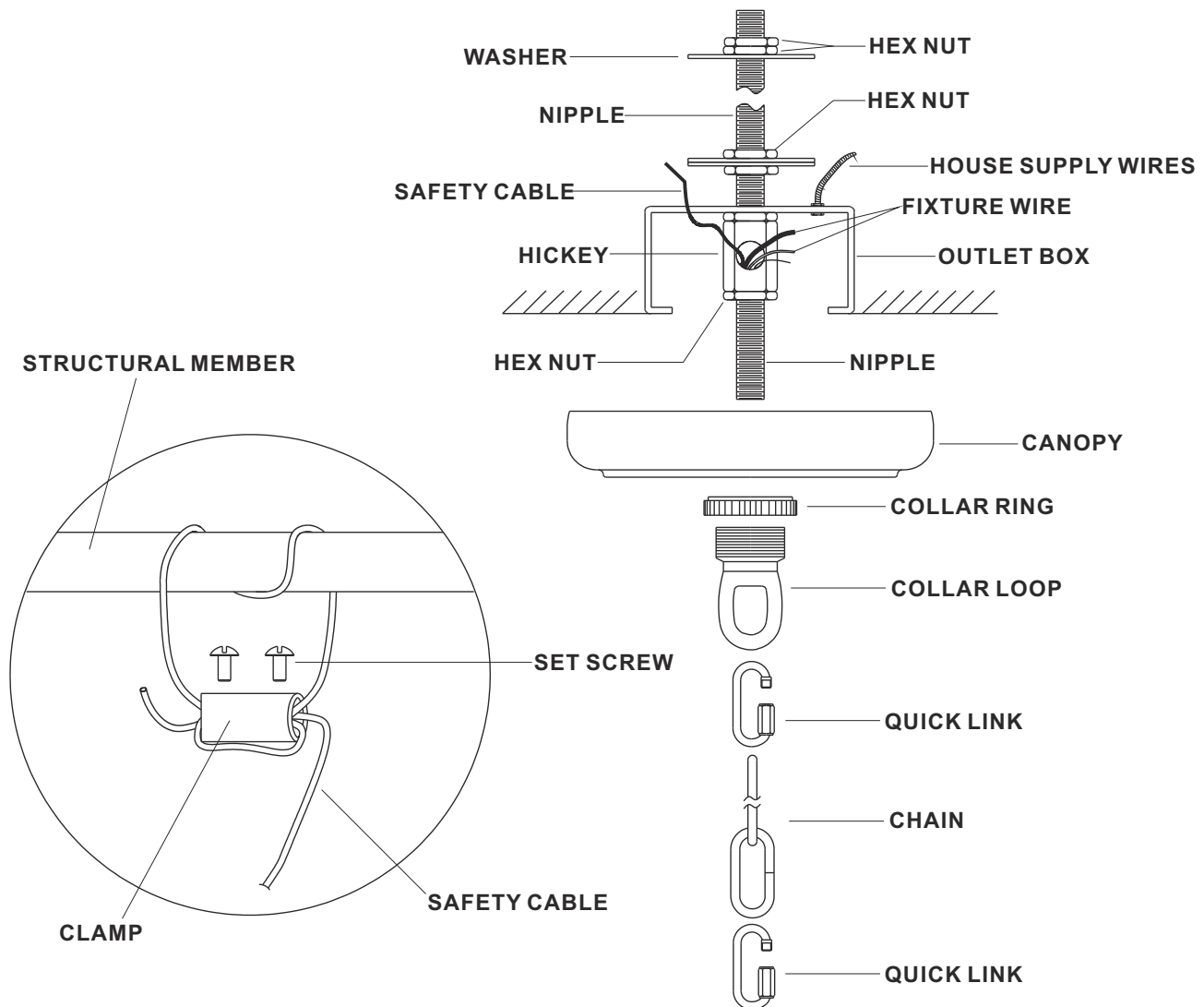
- A. (2)-Wire Connector
- B. (1)-Mounting Plate
- C. (6)-Plastic anchors & screws
- D. (6)-Outlet Box Screws
- E. (1)-Ground Wire
- F. (1)-Cable Wire
- G. (1)-Canopy; w27.5" x 5" x h0.8" (XFB1417AGCAN27IN)
- H. (6)-Screws
- I. (2)-Chain; 72", 3.8mm (XFB1417PNAGA3.8MM)
- J. (2)-Fixture Loop
- K. (2)-Metal Tube; 8.5", 16MM thickness (XFB1405AGROD8.5IN)
- L. (2)-Threaded Pipe; 9.5", 12MM thickness (XFB1405AGSTEM9.5IN)
- M. (1)-Frame



Before screwing the threaded pipe, please loosen the set screws on the side of the coupling, tighten it when the threaded pipe is screwed all the way down.



SAFETY CABLE INSTALLATION INSTRUCTIONS



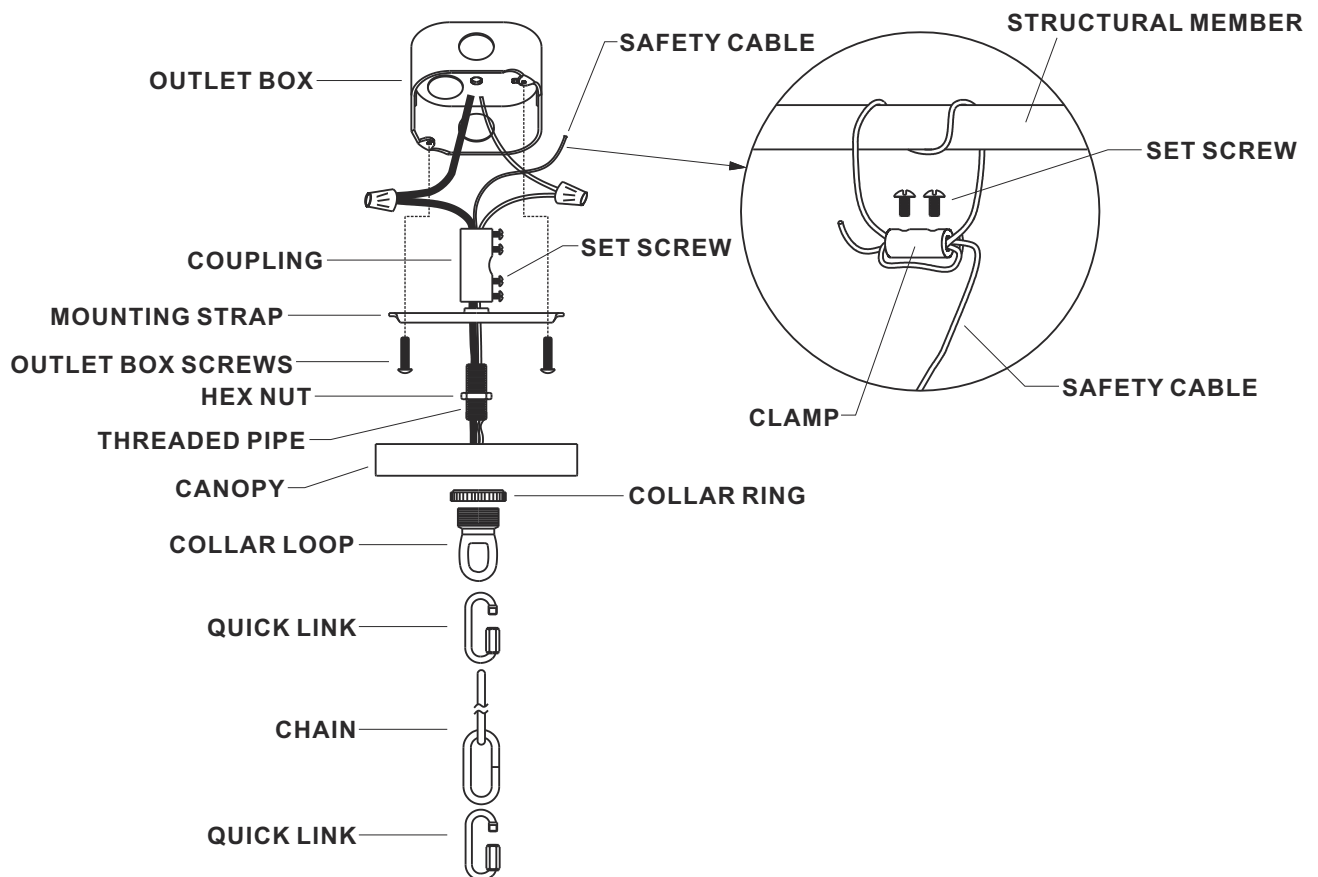
IMPORTANT:

FOR A SAFE AND SECURE INSTALLATION, THESE FIXTURES MUST BE INSTALLED BY MEANS OF SUPPORTS THAT ARE INDEPENDENT OF THE OUTLET BOX.

SUGGESTED INSTALLATION:

1. Provide a 1/4 IPS pipe with one end securely mounted to a beam or a structural member. The other end should protrude through the center of the outlet, as shown.
2. Assemble the screw collar loop, nipple, hex nuts and hickey to center 1/4 IPS support pipe and adjust overall length to allow the collar ring to hold the canopy flush to the ceiling. When the adjustments have been completed secure the hex nut, as shown.
3. Use one quick link to connect fixture loop and the bottom of chain. Slide the screw collar ring over the upper end of the chain, through the (Finished side down). Then use another quick link to connect collar loop and the top of chain.
4. Lace the fixture wires, ground wires and safety cable through the chain and screw collar loop, exiting through the side of HICKEY. Proceed to attach the FIXTURE GROUND WIRE to HOUSE GROUND WIRE using wire connector. Using wire connectors, connect the HOUSE WHITE WIRE to the FIXTURE SUPPLY WIRE (WHITE OR RIBBED SIDE); connect the HOUSE BLACK (or RED) WIRE to the FIXTURE SUPPLY WIRE (BLACK or SMOOTH SIDE). Wrap all connectors with approved electrical tape. Wrap safety cable around outlet box brace and pull cable taut. Secure cable with the clamp and (2) set screws provided, as shown.
5. Push the CANOPY upward over the OUTLET BOX. Be sure that all wires are carefully tucked into the OUTLET BOX cavity. Secure canopy against ceiling by threading CANOPY LOCK RING onto the CANOPY LOOP. Tighten until snug.

***** ATTENTION-If the use of the Mounting Bracket is the installation method being done, you will need an outlet box (not supplied) rated for 100lbs or more *****



NOTE:NEC CODE (314.24) requires that ceiling outlet boxes in the United States support up to 50 lbs. This fixture exceeds 50 lbs. and must be installed using an outlet box approved for up to 100 lbs. or independently of the existing outlet box. Installation hardware and instructions are provided for both.

MOUNTING TO A 100 lb. MAX. APPROVED OUTLET BOX.

- 1. Feed the Support cable from the fixture through the outlet box. Drill 3/16" diameter hole in outlet box if no other holes are available. Wrap safety cable around the structural member and pull cable taut. Secure cable with the clamp and (2) set screws provided.**
- 2. Screw the threaded rod into the coupling until the threaded rod is flush with top of the coupling. Secure in place by tightening the sets screw.**
- 3. Pass the threaded pipe through the mounting strap.**
- 4. Thread screw collar loop onto the threaded rod until the threaded rod is flush with hole on lower side of screw collar loop.**
- 5. Secure screw collar loop in place by tightening the hex nut.**
- 6. Assemble the mounting strap to outlet box using screws provided with outlet box.**
- 7. Use one quick link to connect fixture loop and the bottom of chain. Slide the screw collar ring over the upper end of the chain, through the (Finished side down). Then use another quick link to connect collar loop and the top of chain.**
- 8. Lace the fixture wires, ground wires and safety cable through the chain and screw collar loop. Proceed to attach the FIXTURE GROUND WIRE to HOUSE GROUND WIRE using wire connector. Using wire connectors, connect the HOUSE WHITE WIRE to the FIXTURE SUPPLY WIRE (WHITE OR RIBBED SIDE); connect the HOUSE BLACK (or RED) WIRE to the FIXTURE SUPPLY WIRE (BLACK or SMOOTH SIDE). Wrap all connectors with approved electrical tape.**
- 9. Push the CANOPY upward over the OUTLET BOX. Be sure that all wires are carefully tucked into the OUTLET BOX cavity. Secure canopy against ceiling by threading CANOPY LOCK RING onto the CANOPY LOOP. Tighten until snug.**